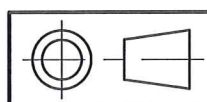


NOTE : WHEN PRINTING FROM ELECTRONIC PDF FILE ENSURE PAGE SCALING IS SET TO "NONE" OR 100%. CHECK PRINTED SIZE USING SCALE ABOVE. MARK OUT HOLES AND CHECK WITH WINCH IN POSITION BEFORE DRILLING.

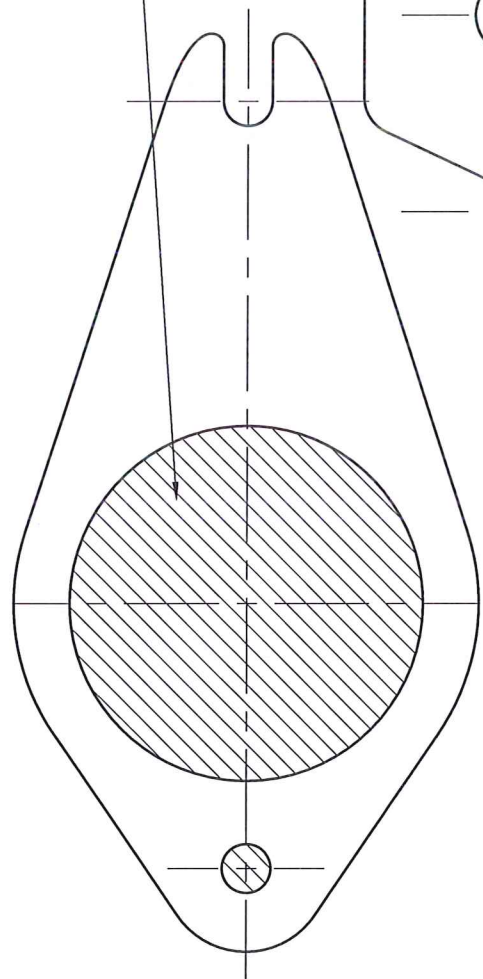


TOLERANCES (mm)	
X.	± -
X.X	± -
X.XX	± -
UNLESS OTHERWISE SPECIFIED	
MATERIAL	FINISH

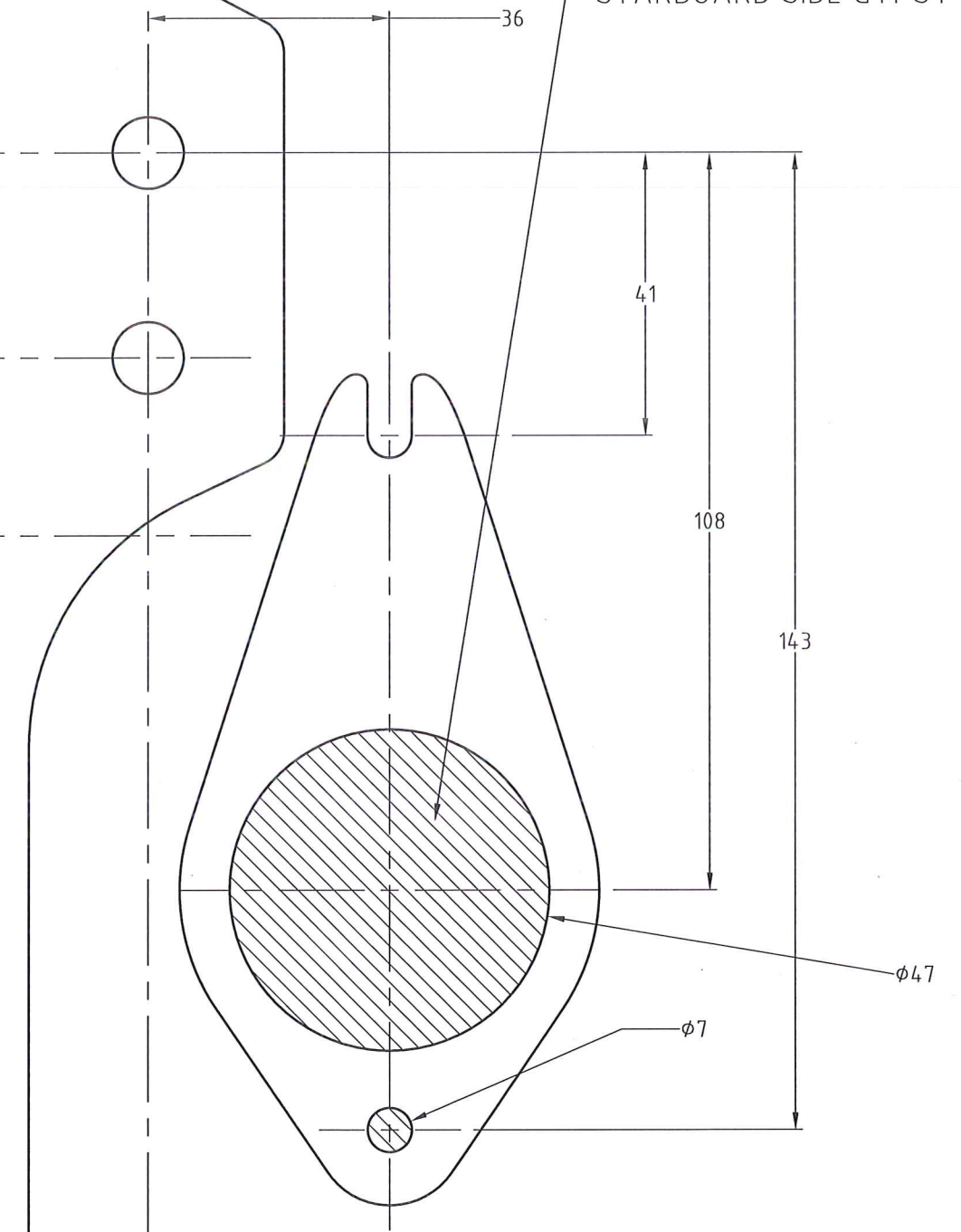
MUIR WINDLASSES AUSTRALIA

TITLE HR1600 COMPOSITE DECK TEMPLATE			
PART No.			
DRN PB	DATE 13/10/2015	DRG No. HR1600DT	SIZE A3
SCALE 1:1	APP1 <i>[Signature]</i>	APP2 <i>[Signature]</i>	
© COPYRIGHT MUIR ENGINEERING PTY. LTD.			

CUT HOLE FOR WINDLASS WITH PORT SIDE GYPSY



CUT HOLE FOR WINDLASS WITH STARBOARD SIDE GYPSY



GYPSY CENTRELINE

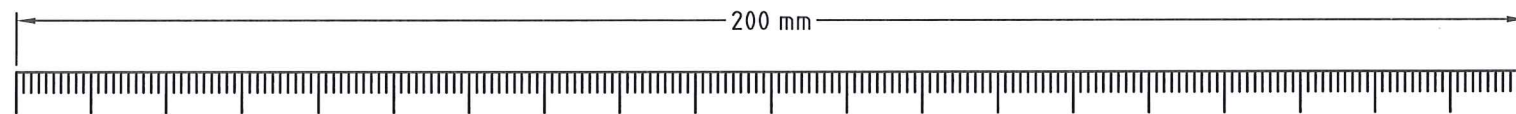
BOW

READ BEFORE INSTALLATION:

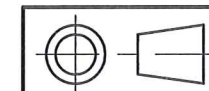
USE THIS TEMPLATE IN CONJUNCTION WITH HR1600 DECK TEMPLATE, HR1600DT.

PLACE WINDLASS IN POSITION WITH GYPSY MOUNTED AND ENSURE CHAIN WILL FALL VERTICALLY INTO CENTRE OF CHAINPIPE BEFORE CUTTING/DRILLING ANY HOLES.

CHAINPIPE POSITION WILL VARY DEPENDING ON CHAIN SIZE, AND THEREFORE GYPSY MODEL.
THEREFORE, DIMENSIONS ARE A GUIDE ONLY



NOTE : WHEN PRINTING FROM ELECTRONIC PDF FILE ENSURE PAGE SCALING IS SET TO "NONE" OR 100%. CHECK PRINTED SIZE USING SCALE ABOVE. MARK OUT HOLES AND CHECK WITH WINCH IN POSITION BEFORE DRILLING.



TOLERANCES (mm)	
X.	± -
X.X	± -
X.XX	± -
UNLESS OTHERWISE SPECIFIED	
MATERIAL	FINISH

MUIR WINDLASSES AUSTRALIA			
TITLE HR1600 COMPOSITE CHAINPIPE LAYOUT			
PART No.			
DRN PB	DATE 08/12/2015	DRG No. HR1600CPDT	
SCALE 1:1	APP1 <i>[Signature]</i>	APP2 <i>[Signature]</i>	SIZE A3
© COPYRIGHT MUIR ENGINEERING PTY. LTD.			

